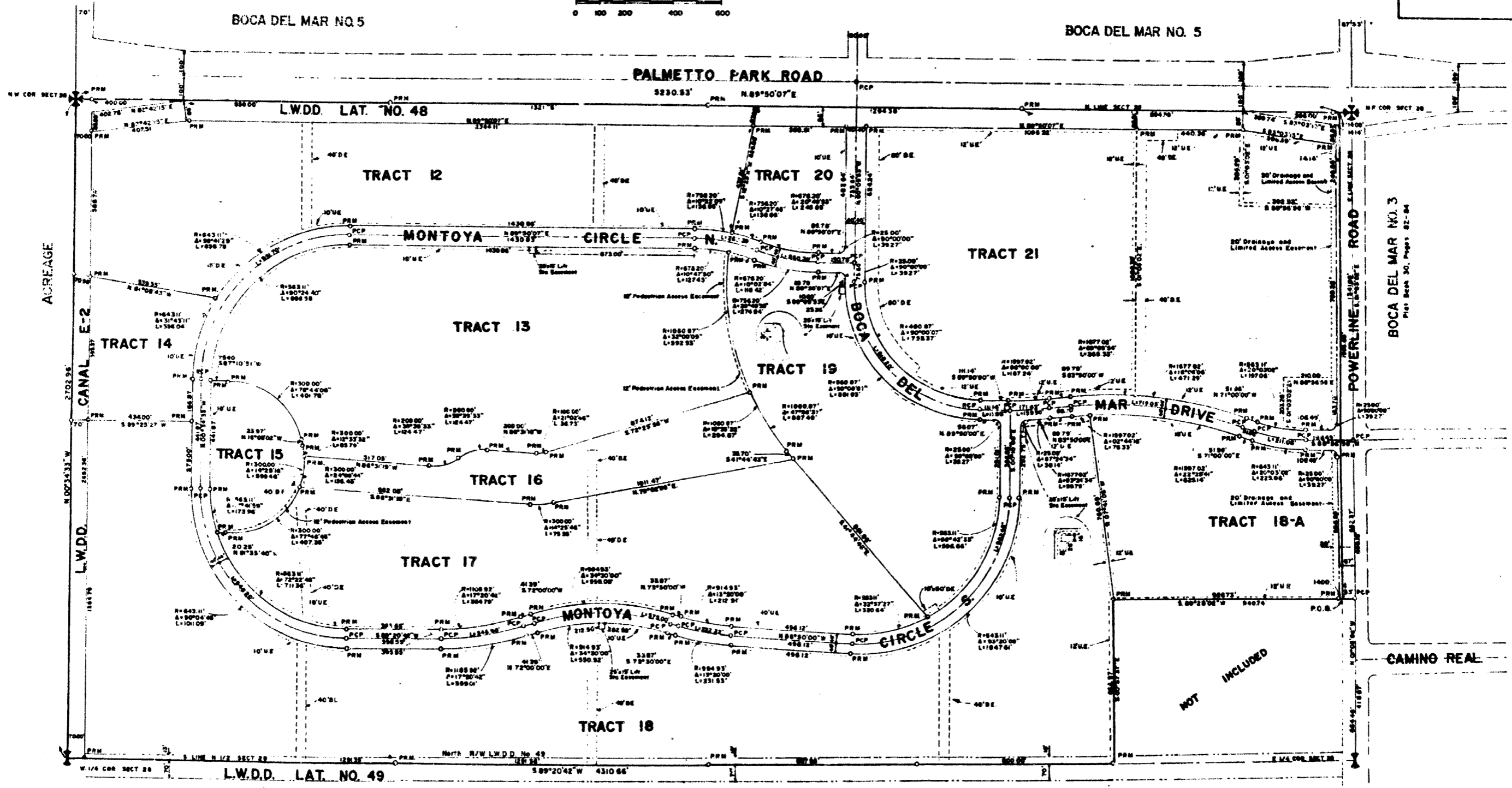
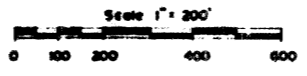
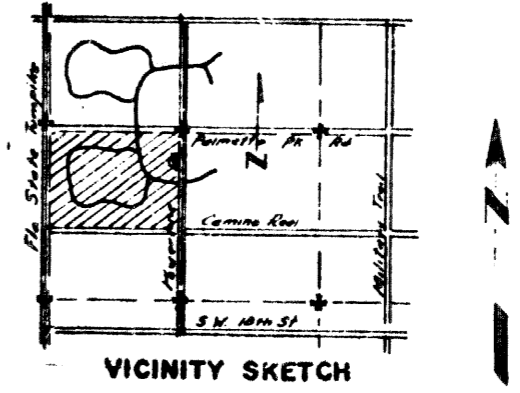


TRACT NO.	AREA	NO OF UNITS	USE
12	36 381 M	123	SF
13	26 984	124	SF
14	6 798	0	HC
15	4 657	0	Civic
16	8 962	0	Park
17	31 855	214	SF - TH
18	69 577	234	SF
18A	15 262	238	GA
19	19 008	297	GA
20	5 845 M	87	GA
21	52 .44 M	0	Commercial
Subtotal	287 094	1317	
Area of Roads	21 063		
Total	308 157		

P.U.D
BOCA DEL MAR NO. 6
 A PLAT OF A PORTION OF SEC. 28, TWP. 47 S., RGE. 42 E.
 PALM BEACH COUNTY, FLORIDA
 JOHN A. GRANT JR., INC. CONSULTING ENGINEERS & LAND SURVEYORS BOCA RATON, FLORIDA

JULY 1973
 SHEET 2 of 2



Bearings shown herein based on bearing of S. 0°03'02".E. along the East line of Section 28, Township 47 South, Range 42 East, as recorded by Plat, Boca Del Mar No. 3, in Plat Book 30, Pages 82 thru 84 of the Public Records of Palm Beach County, Florida

This instrument was prepared by:
 John A. Grant, Jr., John A. Grant, Jr., Inc.
 3333 N. Federal Hwy., Boca Raton, Fla.

ACREAGE
PROJ# 0205-391
 10262